

Contents

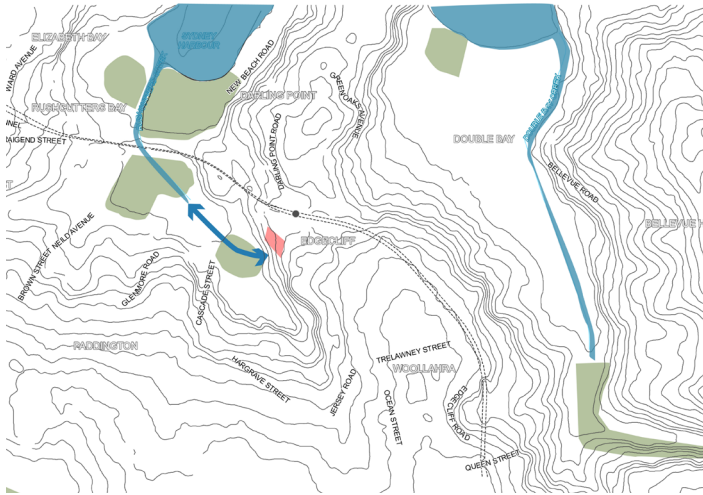
- 1 Introduction / Vision**
- 2 Landscape integration**
Built form
- 3 Landscape zones**
Groundfloor Open Central Courtyard
Communal open space roof gardens
Landscaped roof gardens / Ecological corridors
- 4 Landscape Diagrams**
Combined - Landscaped Areas and Canopy Cover
- 5 Technical**
Planting
Sustainability
Materials
- 6 Appendix**
Landscape Drawings

Background / Visions

The landscape includes a diverse range of landscaped spaces, each possessing its own distinct character and experience, which contributes to a strong sense of place and enhances the residential development. The primary aim of these landscaped spaces is to create culturally balanced, inclusive, and functional environments that provide lasting quality, significance, and relevance within the urban setting.

Harbour sandstone

The elevated sandstone ridge landscapes are integral to Edgecliff and the surrounding areas. The pixelated sandstone stratification, shaped by erosion from coastal winds and streams, creates a textured and patterned landscape characterized by the edges and platforms of the harbour. A stream flows through to Rushcutters Bay.



Geographic location - Water movements through sandstone



Sandstone expression

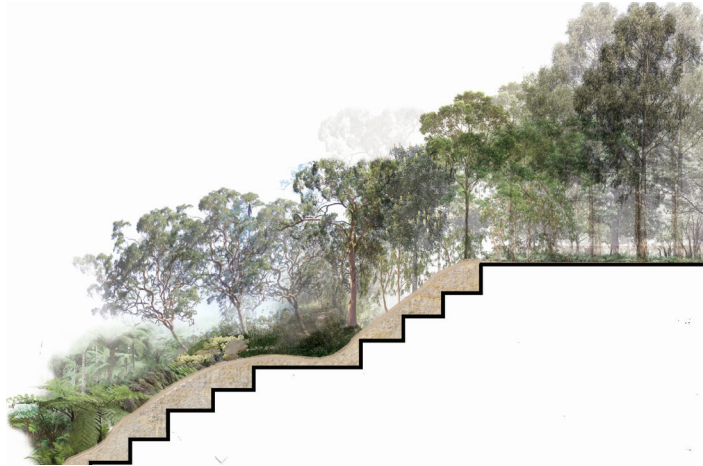


Vegetated corridors

The quality of the landscape and the layering of vegetation and sandstone that once occupied the site and surrounding area down to the harbour are incorporated into the landscape proposal. The vegetation communities expressed within the three main landscape spaces as follows:
Elevated Sandstone Plateau and Ridge (Streetscape Edge)
Sydney Peppermint, Smooth-barked Apple, Scribbly Gums.

Gullies and ravine (Open Central Courtyard)
Water Gum, Lillypilly Cabbage Tree groves
Shelter Gullies Cyathea australis and Dicksonia antarctica

Ridge Line (Terraces)
Banksia serrata, Banksia integrifolia, lomandra spec and Grass trees.



Vegetation Communities



Site Context - green corridor

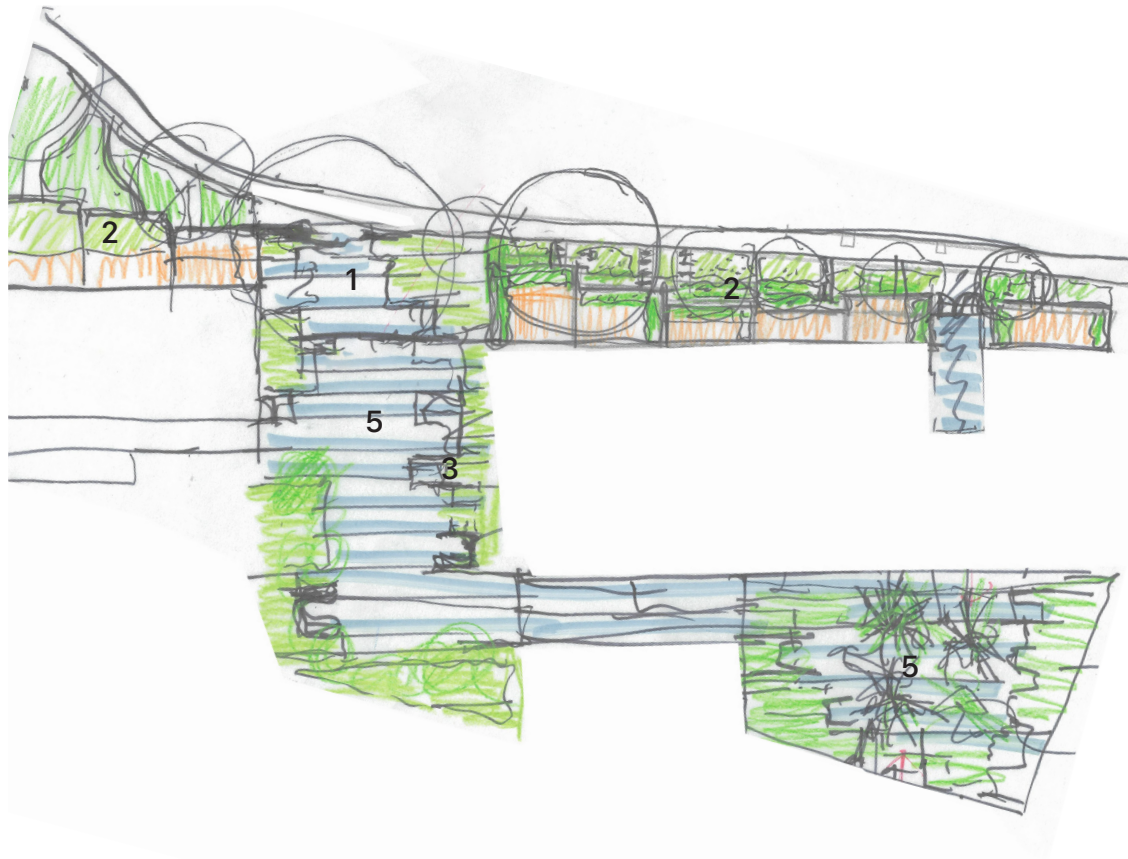


Integrated Landscape

The landscaped areas have been designed to integrate the built environment and public spaces, resulting in culturally inclusive, functional, and enduring landscapes with appropriate amenities.

The following landscapes spaces are carefully integrated into the built form and public domain interface:

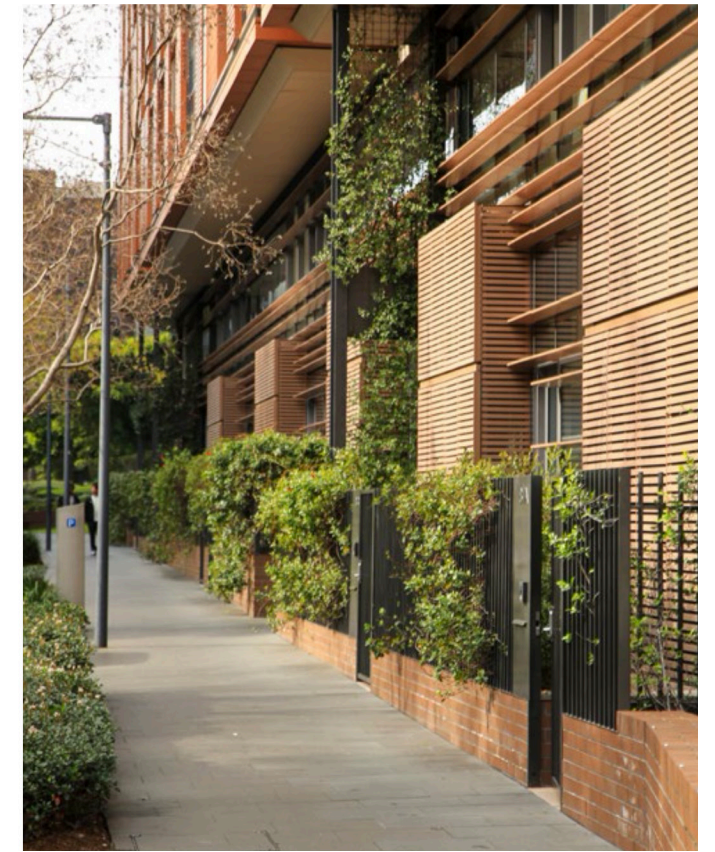
1. Welcoming entry
2. Street frontage Garden apartments
3. Linear landscaped elements hard and soft
4. Landscaped Courtyards



Sketch- Creating an inviting entry balanced with soft seating and paving, featuring a unified design language of linear sandstone stratification.



Landscaped street frontages - Fjc Capella apartments, Rose Bay apartments



Landscaped street frontages - Fjc Central Park

Ground floor Landscape Plan



LEGEND

- SITE BOUNDARY
- EXISTING TREES TO BE RETAINED
- PROPOSED TREES

Legend

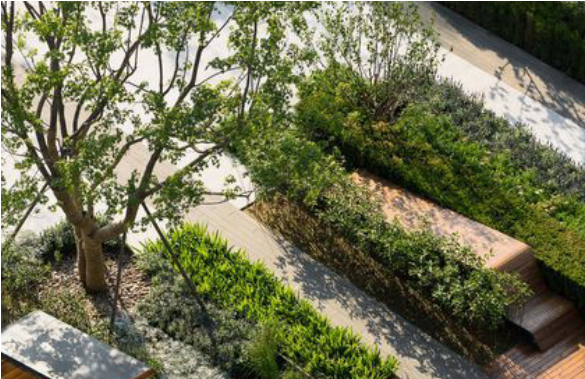
- 1. Entry to open Central Courtyard
- 2. Garden apartment
- 3. Open courtyard
- 4. Streetscape
- 5. Rainforest/green buffer
- 6. Existing Concrete Path
- 7. Egress (elevated deck)



Landscaped Frontage



Linear landscaped elements



Balance of hard and soft groundplane materials

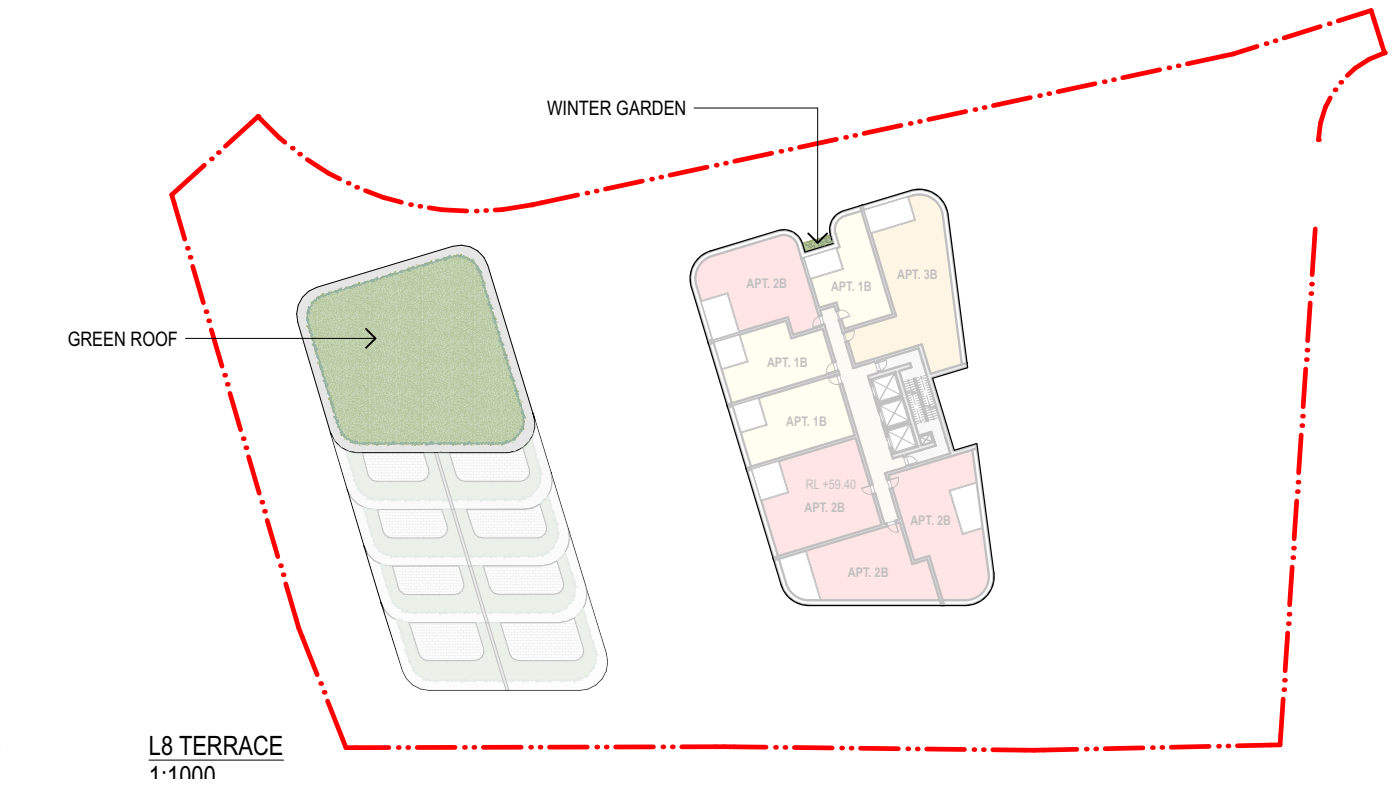


Linear sandstone expression



Landscaped Rooftop - Ecological Corridors

The green roof areas present an opportunity to incorporate a variety of native plants, grasses, and trees, particularly from the eastern suburbs Banksia scrub. This installation demonstrates the effective use of green roofs. Integrating plant life into building designs is essential for addressing the challenges posed by a growing population, climate change, and habitat loss.



Rooftop planting of flowering native vegetation to contribute to biodiversity and pollinating corridors and provide visual landscape

- Legend
- 1. Green roof planting
 - 2. Gravel maintenance access edges
 - 3. Integrated planters



Fjc Project reference images: integrated seating / skylights

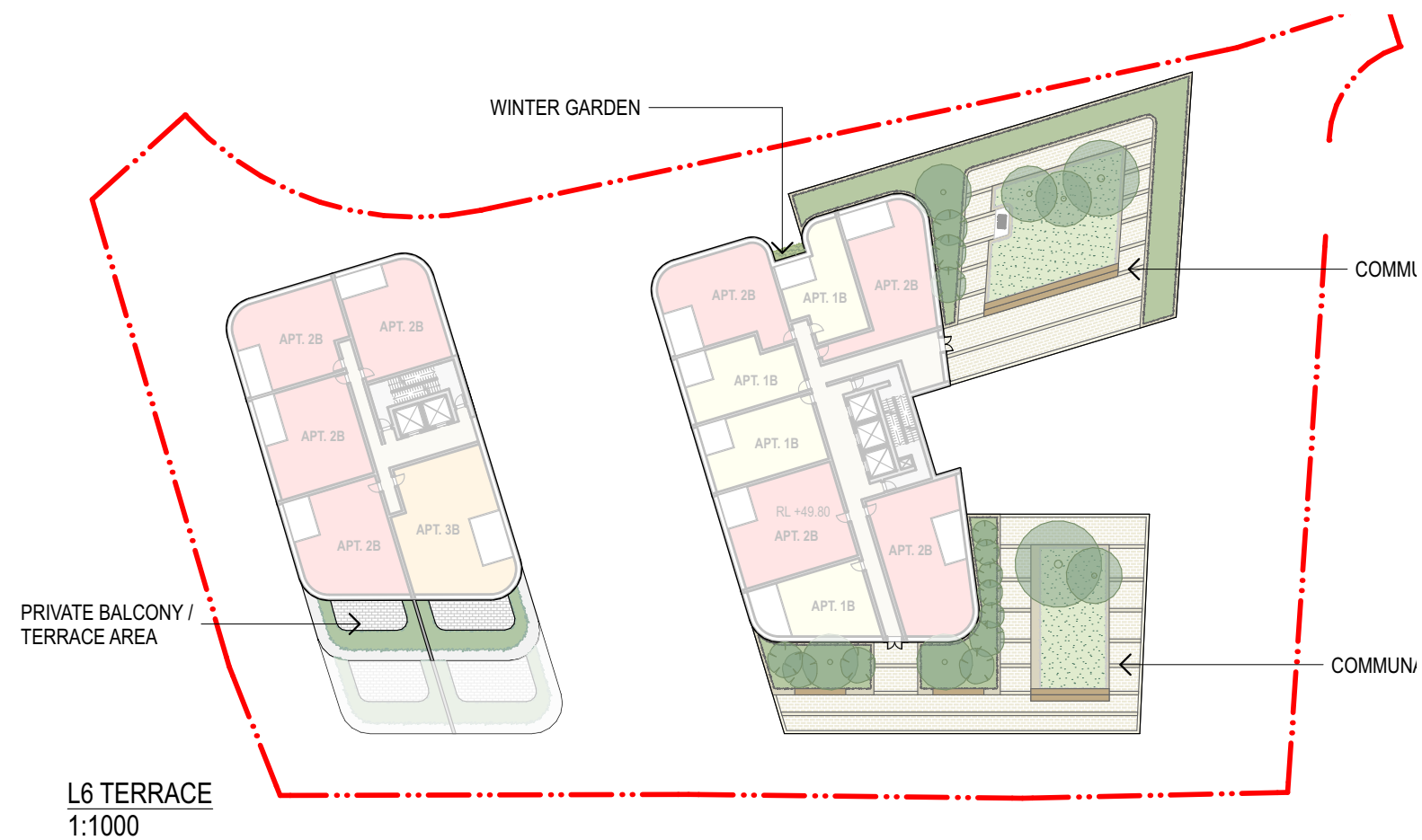
Landscaped terraces Broadway One central

Bee hives part of roof garden setting

Green roof and gravel access Fjc Liverpool Civic Place

Communal Roof Gardens

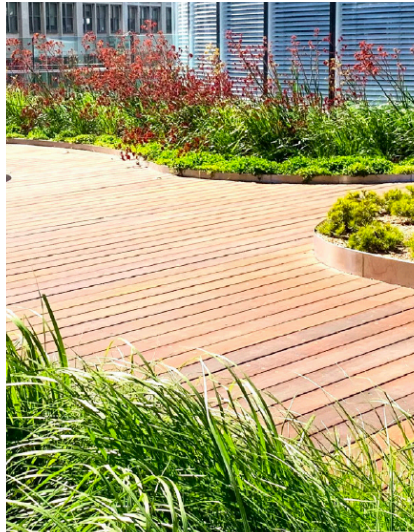
The design takes into consideration views, light, sun access, privacy, equitable access and wind mitigation. The objective is to combine the functional amenity of the spaces with a diverse and thriving ecosystem that includes a wide variety of native species, habitats, and ecologies within an urban setting, offering a welcome connection to nature.



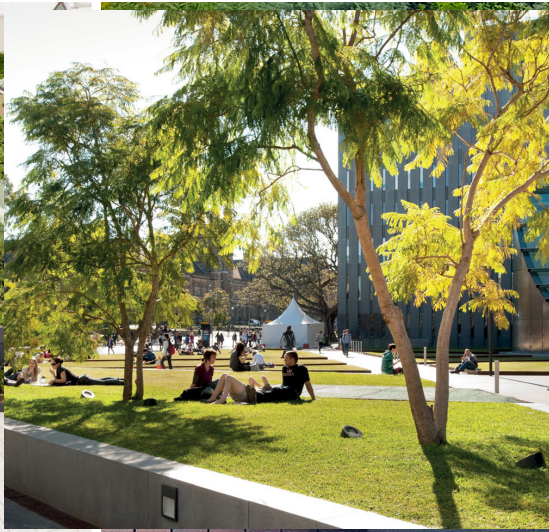
Planted green roofs of layered planting pallet indigenous native grasses and ground covers



Integrated seating / planters



Timber deck areas soft edges maximise permeable surfaces



Planted facade edges

Tree Canopy Coverage / Planting



Existing Tree Canopy Coverage - 37%



Proposed Lower Ground Tree Canopy Coverage - 37%

[Site Area = 7,226m²]

Existing Canopy Cover		
Ground Level Trees (High Significant and Significant Trees)	2667m ²	37%
Proposed Canopy		
Ground Level Trees	2690m ²	37%

LEGEND

- SITE BOUNDARY
- HIGH SIGNIFICANT TREE TO BE REMOVED
- EXISTING TREES TO BE RETAINED
- PROPOSED TREES

Planting Strategy

The planting strategy is to create a cohesive design through the use of carefully selected species that demonstrate a connection to the concept of place making and link to the three landscape community types, Elevated sandstone plateau and ridges, Gullies and ravine, Sandstone Ridge Line. The preference is for endemic plants to the Sydney area however the selection will also address the following: Suitable for the existing micro climatic conditions (wind, access to sunlight); Low water use plant species; Maintenance requirements (such as watering regime, fertilising and pruning replacement); Wind breaks to mitigate microclimate conditions; Crime prevention through design; Privacy and screening. Selected plants provide visual interest through form, texture and variations in seasonal colour. A diverse planting scheme comprising mass planting of native plant species and a selection of drought tolerant species is proposed for the podium terrace.

The plant palette takes into account the potential impact of wind that may affect the plants at upper levels. The use of diverse shrubs and understory layer in various forms helps create spaces, achieve accents to the various gardens that are experienced by the tenants and guests.

Elevated sandstone plateau (Street Frontage)



Sydney Peppermint
Eucalyptus piperita

Flannel Flower
Actinotus helianthi

Kangaroo Grass
Themeda triandra australis

Ridge Line Community (Terraces)



Native Fuschia

Old Man Banksia

Pinnate Boronia

Gully Community (Open Central Court)



Blueberry Ash
Elaeocarpus reticulatus

Rasp Fern
Doodia aspera

Sydney Rock Orchid
Dendrobium Speciosum



Bird's Nest Fern

Gristle Fern

Rough Treefern

Sustainability

Sustainability

The intention is that sustainable ecological principles are integrated into the landscape design with the primary focus on water. Principles such as sustainable Drainage Systems, a thorough plant selection process and site microclimatic analysis inform the layout, materials selection and environmental response. Initiatives such as rainwater harvesting and reuse, consideration of the extent of embodied energy within landscape materials, durability of material selection and resource requirements of new planting are all considerations and is summarised below:
The primary landscape sustainability initiatives

Water management

- Where possible, stormwater runoff will be collected and treated in local bio-retention systems incorporated into the podium planting zones . Appropriate species and best practise will be utilised in order to locate and design the stormwater treatment areas,
- Capture stormwater runoff and convey treated runoff from the rain gardens. Seating elements and raised platforms are options that can be used to mitigate the set downs required to pond and treat the stormwater and to maintain public safety.
- Stormwater is to be harvested and

retained on site for re-use in the planter bed irrigation system. The garden beds are open to the sky and where possible clear lines of sight are maintained across the public open spaces.

- The integration of green roofs and planted trellises offer water sensitive urban design options to assist in the filtration of stormwater pollutants, improve the thermal performance of the building and attenuate stormwater flows.



Granite Cladding

Steppers

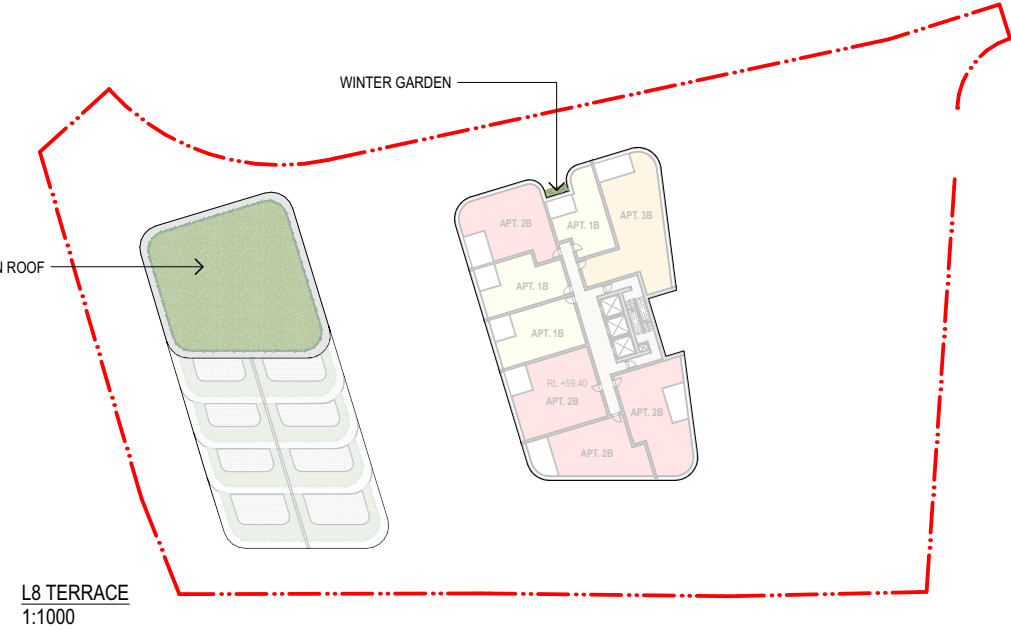
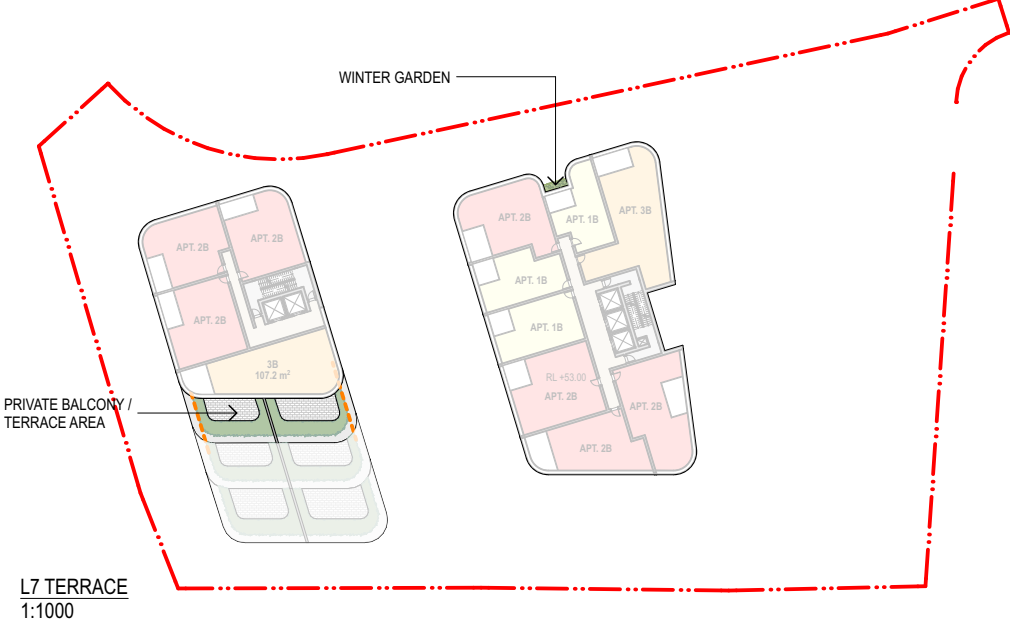
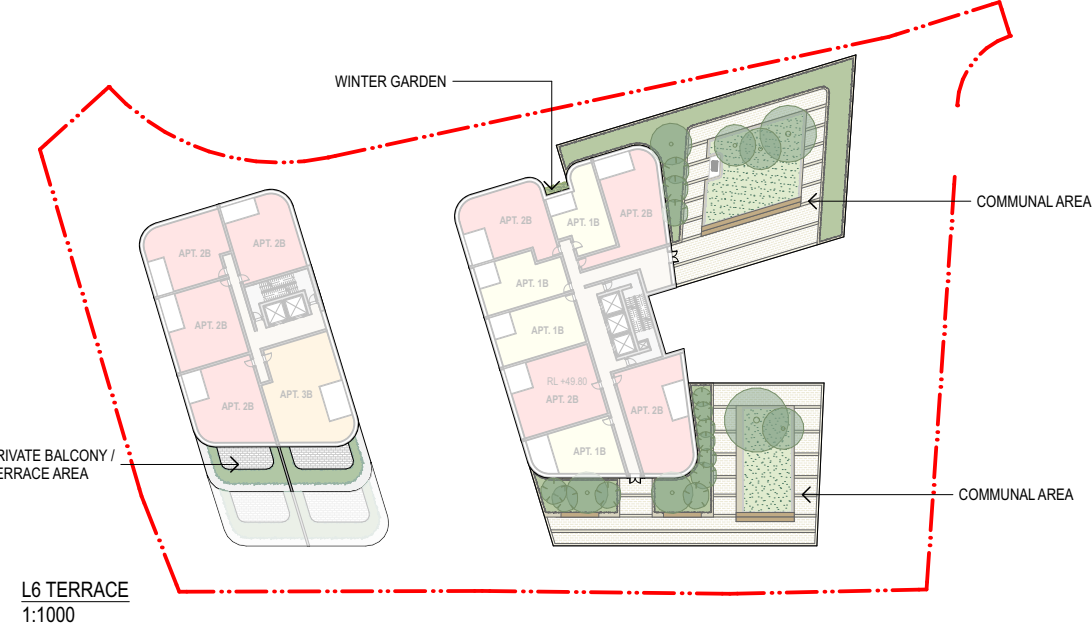
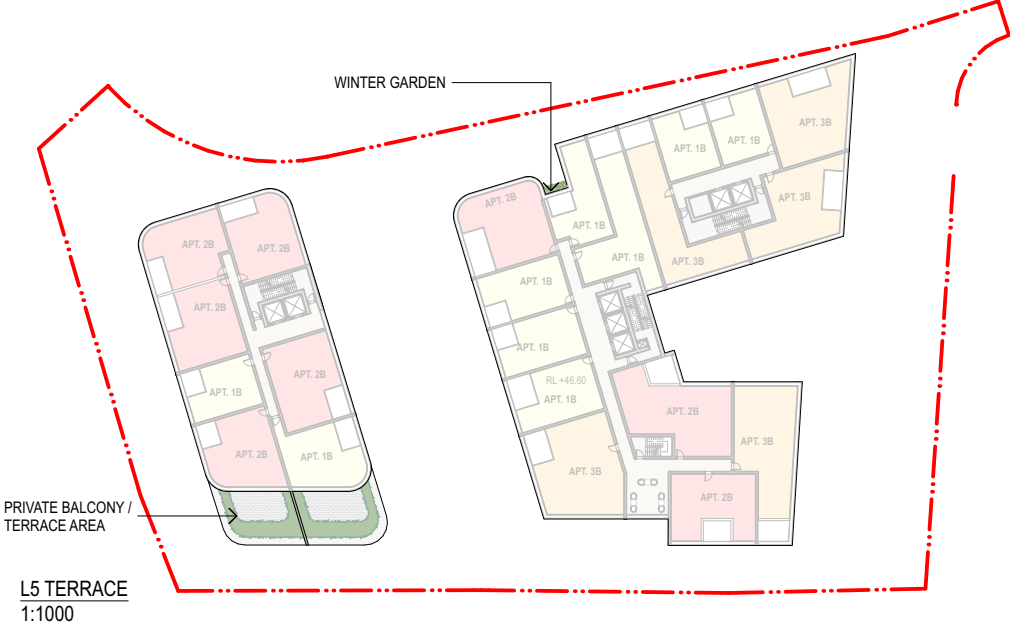
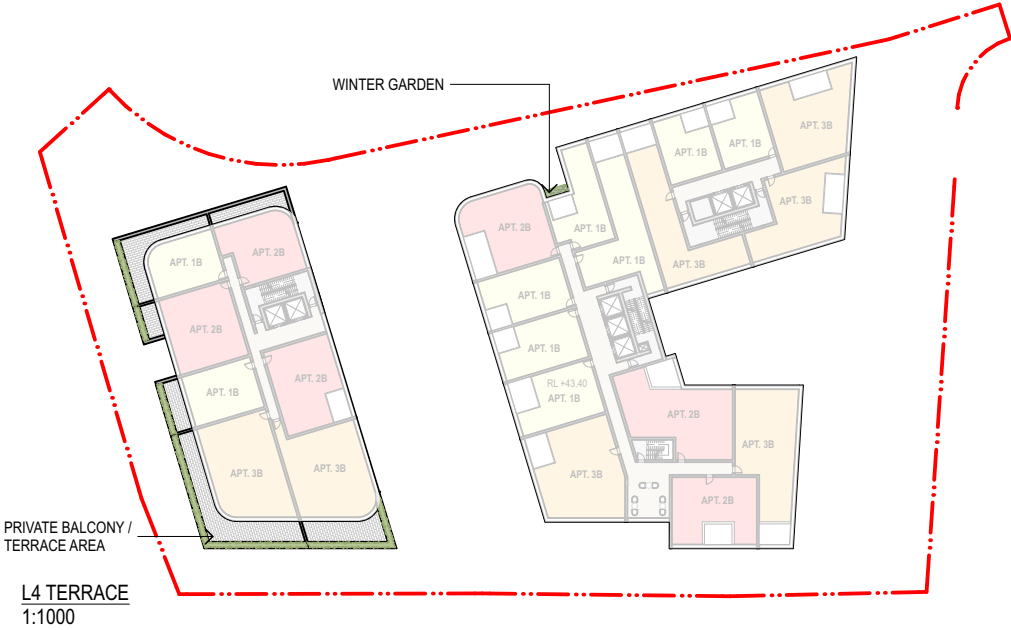
linear bands

Custom bench seats

Permeable soft edges

The Landscape materials have been derived from the unique Sydney linear textured contextual landscape





- LEGEND**
- SITE BOUNDARY
 - +RL.XXXX PROPOSED LEVELS
 - PROPOSED TREES
 - BENCH SEATING
 - ▨ GRANITE PAVEMENT
 - ▩ GRANITE PAVEMENT
 - PLANTER WALL
 - MASS PLANTING
 - ▨ TURF
 - GREEN ROOF

Landscape Planting Area	
Ground Floor	1011m2
L4	42m2
L5	63m2
L6	573m2
L7	54m2
L8	55m2
L9 Green Roof	347m2





Existing Tree Canopy Coverage 37%



ProposedTree Canopy Coverage 37%

LEGEND

- SITE BOUNDARY
- HIGH SIGNIFICANT TREE TO BE REMOVED
- EXISTING TREES TO BE RETAINED
- PROPOSED TREES

[Site Area = 7,226m2]

Existing Canopy Cover		
Ground Level Trees (High Significant and Significant Trees)	2667m2	37%
Proposed Canopy		
Ground Level Trees	2690m2	37%

Sydney

Level 5, 70 King Street
NSW 2000 Australia
t + 61 2 9251 7077

Melbourne

Level 2, 56 Hardware Lane
VIC 3000 Australia
t + 61 3 9604 2500

Brisbane

Level 6, 123 Eagle Street
QLD 4000 Australia
t + 61 7 3112 8558

UK

Level 1, 8 St Aldates
United Kingdom OX 1 1BS
t + 44 1865520 420

Find us on Instagram and LinkedIn: @fjcstudio

www.fjcstudio.com

Francis-Jones Carpenter Pty Ltd ABN 28 101 197 219

Nominated Architects NSW Richard Francis-Jones 5301 Elizabeth Carpenter 6141

Nominated Architects VIC Richard Francis-Jones 15505 Geoff Croker 50972

Nominated Architects QLD Sean McPeake 6147 Richard Francis-Jones 4232

